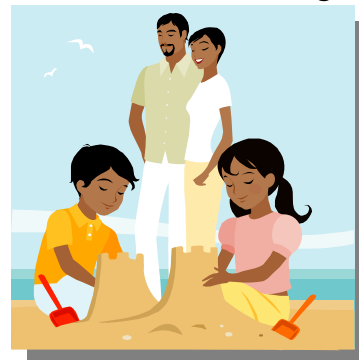


Sinclair Community College, Center for Nursing Continuing Education,
Center for Healthy Communities, AHEC Region IV and HealthLink Present:

Childhood Learning Challenges: Impact on the Family

September 16, 2008
8:30-12 noon

Madison Lakes Park Lodge
581 Olive Road
Dayton, Ohio
(Free parking)



Registration and Refreshments at 8:00 am

- How you can help families with special needs children
- What works and what doesn't
- What you can do to make a difference

Objectives

1. Identify different categories of child disability.
2. Explain the challenges that impact families of children with disabilities.
3. List early childhood and family support networks.
4. List available resources for assessment, respite care, residential settings, counseling, and parent support.

Participants will hear about approaches to use in helping families understand and use the available support systems for a child with disabilities. This program will describe family stressors when a child is identified as having some type of disability. Through focused questions by experienced facilitators, parents will illustrate their issues and concerns, identify support systems used and describe unmet needs. Using case studies, small groups will problem-solve family issues.

To register or for further information contact:

Annemarie Halfpap, 937-775-1114 • donna.halfpap@wright.edu
Center for Healthy Communities
For map & directions go to:
<http://www.med.wright.edu/chc/programs/hlmvtrainings.htm>

Continuing Education

3.5 contact hours provided for nurses:

Sinclair Community College (OH-101/07-1-09) is an approved provider of continuing nursing education by the Ohio Nurses Association (OBN-001-91), an accredited approver by the American Nurses Credentialing Center's Commission on Accreditation.

3 contact hours provided for social workers and counselors:

Ohio Counselor, Social Work and Marriage and Family Therapist Board. Approval #MCS090809.

\$10 fee for continuing education credits. There is no charge for attendance only.

Space is limited, so call to reserve a place. RSVP by Sept. 9, 2008 • 937-775-1114